

[View in browser](#)



Dear FWPA Member,

Welcome to the 1st edition of FWPA's softwood manufacturer's' (SMAC) newsletter.

This industry update will be sent monthly and has been specifically curated for the benefit of Executive and Technical SMAC members.

Each edition will include relevant updates on all FWPA's activities including: R&D, Stats & Economics, Codes & Standards and the Built Environment.

This initiative has been implemented to add further value to existing services provided by FWPA, and we welcome your input on the content.

If you would like to provide feedback, please get in touch.

**ph:** 0409 279 611

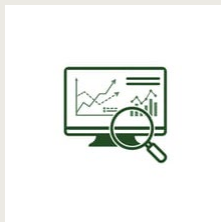
**email:** [Ian.Blanden@fwpa.com.au](mailto:Ian.Blanden@fwpa.com.au)

Regards,

**Ian Blanden**

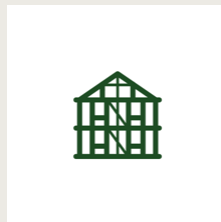
Head of Research, Development & Extension

## Jump to what interests you most...



### Industry health check

The latest statistics and economic insights to support your business decisions



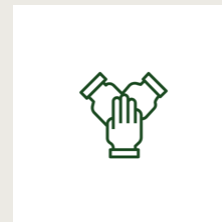
### SMAC updates

Steering the softwood manufacturing sector to a more resilient and sustainable future



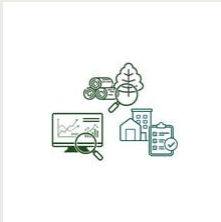
### R&D projects & programs

Investing in initiatives to boost competitiveness and growth of our softwood processing sector



### AFWI collaborations

Ensuring valuable knowledge is leveraged to advance scientific research and industry development



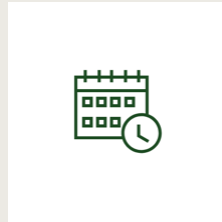
[Our services](#)

Providing members with data, analytics, extension programs, and advisory support services



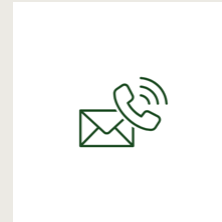
[Our brands](#)

Delivering clear commercial value propositions to clients and industry stakeholders



[Important dates](#)

Mark your calendar for upcoming webinars, meetings, workshops and conferences



[Get in touch](#)

Key contacts within FWPA to support you with the latest insights, resources and industry connections

# Industry health check

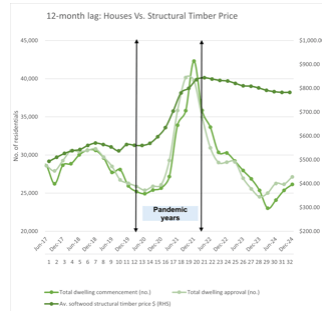
with Dr Hansnata



Combined share of townhouses & low-to-midrise apartment approvals have **risen by 30%**

Published Mon 29 Sep 2025

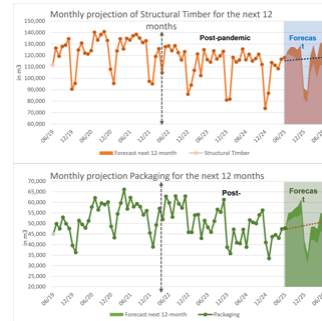
[login to read more](#)



**Unpacking the trend** between timber prices and dwelling construction

Published - Fri Aug 29 2025

[login to read more](#)



Access the latest structural and packaging sales data & forecast

Published - July 2025

[login to read more](#)

Visit the data dashboard

Having trouble logging in? [Contact Ian Blanden here](#)

---

## Softwood Manufacturers' Advisory Committee (SMAC)

- The 5<sup>th</sup> SMAC meeting was held in Bunbury, WA to brainstorm strategy & priorities.
- Plans for an externally facilitated CEO/Senior Exec. meeting are underway to finalise vision setting and R&D prioritisation. Date TBD.

An external facilitator Sarah Nolet from Tenacious, will be engaged, having had experience with the recent GRAC CEO+1 Priority Setting Session held in August.

Access SMAC presentations & meeting material

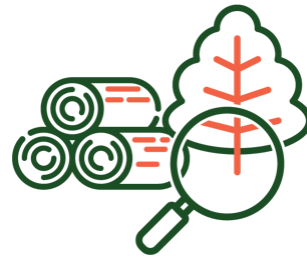
---

## Research & Development

### Building a low-carbon future

This industry-wide project provides an emissions snapshot using 2023 as the baseline and provides several pathways for becoming an overall net sequester of carbon.

Recently undergoing a thorough peer review by Fabiano Ximenes it's close to being finalised. **Presentations will be available at the upcoming AFPA Chamber meeting.**



### On-farm GHD emissions (gap analysis)

Led by Blair Freeman (Indufor) and funded by DAFF this is being conducted across all agriculture via the Rural Research & Development Corporations (RDC's). **Final report due December 2025.**

### AI Alliance

We've joined an AI Alliance across all Rural Research &

Development Corporations (RDC's) to explore opportunities for AI across our sector.

The aim is to seed investment for 12-months, enabling work to commence prior to a more substantial investment proposal expected in March 2026.

## FWPA historical R&D library

We're currently uploading hundreds of research reports from the three (3) centres comprising the former National Institute for Forest Products Innovation (NIFPI).

This initiative aims to minimise risks of research duplication and allow data mining of previously untapped research outcomes.



## Future Framing Initiative

This landmark collaboration harnesses Modern Methods of Construction (MMC) to revolutionise how we build, combining off-site precision manufacturing with enhanced on-site productivity to **deliver buildings faster, smarter, and more sustainably than ever before.**

The FFI unites the entire building ecosystem - from lightweight timber suppliers and fixings manufacturers to designers, fabricators, educators, builders, and installers, in a coordinated effort to create scalable, high-quality timber framing standards that drive competitiveness for the building sector.

[Learn more](#)

ARC Advance Timber Hub

Comprising **eight interdependent nodes** and **30 individual projects**, the Hub is tightly aligned with **commercial KPIs** under three themes:

- Innovative Solutions**
- Transformative Benefits**
- Planning Change**



**Join our next showcase webinar**  
Session 2 - Mon 27 Oct (2pm AEDT)  
[Review agenda and register here](#)

Save the date: **15 December 2025** —  
Strategic Planning Day in Brisbane.

Hub participants receive detailed node-level reports; public newsletters will summarise high-impact outputs and investment opportunities.

[Access public newsletters](#)



## National Centre for Timber Durability & Design Life

A globally leading centre, backed by FWPA, UniSC, UQ and QDPIF, tackling timber lifespan, durability, and design innovation across **14 major projects**.

The Centre has two over-arching goals:

1. **Create coordinated research in timber durability**
2. **Educate a new cadre of research scientists to carry on the work**

across Australia.

### **Circular Economy Project**

Recent funding includes a **\$75,000 grant** from South Australia's Department of Primary Industries & Regions for a "Co-Pilot Proof of Concept" on reusing vineyard posts. A new project on LOSP (Light Organic Solvent Preservative) quality assurance will begin shortly.

### **Website updates**

The [Durability Centre](#) has recently enhanced the visibility of its important work. This now includes all publications, presentations and newsletters.

[Access project snapshots](#)



### **AFWI Collaborations**

The three AFWI Research Centres now have approved business plans. FWPA is working with AFWI to streamline R&D initiation, ensuring each project is both **industry-driven and efficient**. Updates will be provided at AFPA Chamber meetings in November 2025.

### **Forestry Australia Conference 2025**

AFWI will host a dedicated panel session ('Path to 2035') [Register here](#)

### **AFWI Innovation Workshop**

FWPA has partnered with AFWI to promote their inaugural spotlight on Bioproducts and Value-Added Opportunities from Forest Fibre & Residues. Keynote speaker is Professor John Warner (USA) - Friday, 24 October 2025 | 9:30am to 2:00pm (AEDT)

[Register free here](#)

---

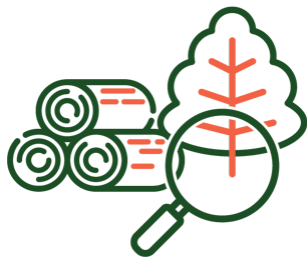
## Important dates



- 20 - 23 Oct 2025  
[Forestry Australia Conference - Adelaide](#)
- 24 Oct 2025  
[Inaugural AFWI Innovation Workshop - Melbourne](#)
- 19 Nov 2025 - 3pm  
FWPA AGM. Invites to be sent 29 Oct 2025

---

## Explore FWPA's brand and services



**Research, Development  
& Extension**



**Statistics & Economics**



**Codes & Standards**

## Get in touch



**Andrew Leighton**  
Chief Executive  
Officer



**Ian Blanden**  
Head of Research,  
Development  
& Extension



**Jodie Mason**  
Head of Grower  
Research  
R,D&E Growers,



**Kevin Peachey**  
Head of Built  
Environment  
Programs

Board, Corporate &  
General

[andrew.leighton@fwpa.com.au](mailto:andrew.leighton@fwpa.com.au)

Processors &  
Importers, Codes &  
Standards, Durability  
Centre, ARC Advance  
Timber Hub

[ian.blanden@fwpa.com.au](mailto:ian.blanden@fwpa.com.au)

GRAC, Forest  
Learning

[jodie.mason@fwpa.com.au](mailto:jodie.mason@fwpa.com.au)

Built Environment,  
WoodSolutions,  
Statistics &  
Economics

[kevin.peachey@fwpa.com.au](mailto:kevin.peachey@fwpa.com.au)

Forest & Wood Products Australia, Suite 6.03, 36 Wellington Street, Collingwood, Victoria 3066,  
Australia, +61 3 9927 3200

[Unsubscribe](#) [Manage preferences](#)